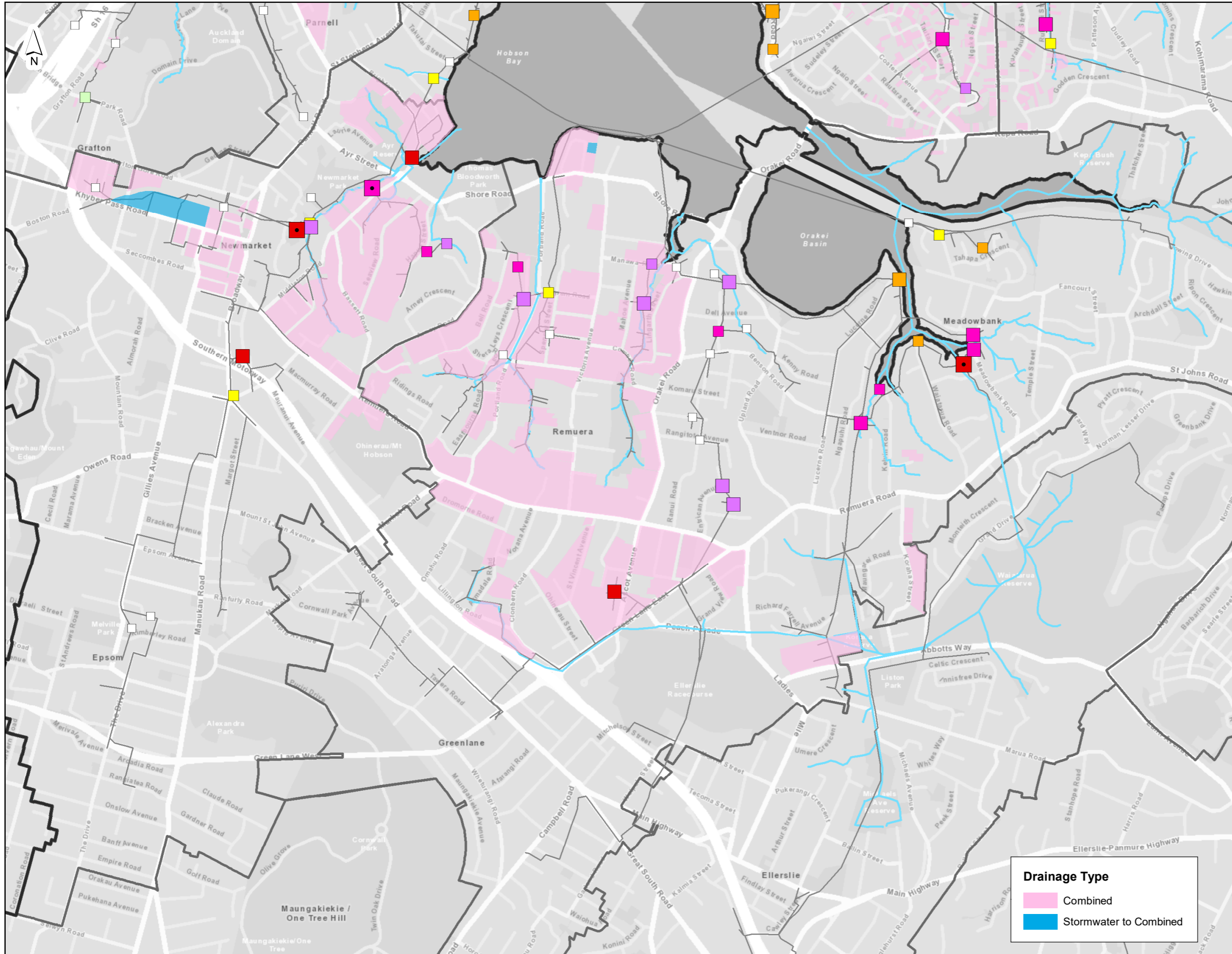


# Eastern Isthmus Water Quality Improvement Programme



## EIWQIP 2015 Scenario, Existing Network Simulated Network Performance 1-yr Long Time Series (2001)

**LEGEND**

**Type 1&2 - EOP  
Spills per Yr**

- < 2
- 2 - 6
- 6 - 12
- 12 - 26
- 26 - 52
- > 52
- Dry Weather Overflow
- No simulated spills

**Volume Class**

- Low (<1,000 m<sup>3</sup>)
- Med (1,000 - 10,000 m<sup>3</sup>)
- Large (>10,000 m<sup>3</sup>)

— Model Pipes  
— Watercourse  
▭ Wastewater Catchment

**Assumptions and Limitations**  
Simulated performance for the existing and future wastewater system is indicative only for this strategic planning exercise. The results show the modelled performance at EOPs within the Mangeru SMA model extents; this does not include all EOPs within the study area but all EOPs of material significance to this analysis are included and EOPs not modelled will be addressed in future detailed studies. Simulated uncontrolled overflows are not shown.

**Scenario Summary**  
2015 wastewater network and RTC  
2015 Resident population  
Calibrated hydrology (wet weather loads)

0.2 0.1 0 0.2 0.4  
Kilometers



**Drainage Type**

- Combined
- Stormwater to Combined

**Watercare**  
An Auckland Council Organisation

**DISCLAIMER**  
Watercare and Auckland Council accept no responsibility for the accuracy of these service records or associated data from this figure. It is provided for indicative purposes only.

Date: Apr 2020  
Scale: NTS



**Auckland Council**  
Te Kaurihera o Tāmaki Makaurau