

# Hapua Thrive – Margot Nicholson

*Vision: 'a healthy valley and foreshore appreciated and nurtured by the community*

[www.hapuathrive.nz](http://www.hapuathrive.nz)

<https://www.facebook.com/CleanUpWaitaramoaHobson/>





Photo Hapua Thrive





## Healthy Connections helps

- join the dots
- keep poo in pipes
- keep us safe





# Community concerns “STINK” Water Quality

[www.hapuathrive.nz](http://www.hapuathrive.nz)

Newmarket

- unpleasant smells and dead eels in the waterways
- Dirty looking water
- Questions whether it was safe to have contact with the water particularly on paddle craft and to eat flounder and other kaimoana
- Questions about children playing in streams, safety of walking school bus and school activities

Hapua  
Reserve







## Newmarket/Hobson Bay wet weather sampling progress August 2020

This map represents data collected during 2019 and 2020. It represents the likely public health risk, with respect to NZ contact recreation guidelines, across Hobson Bay/Waitaramoa as at 19 August 2020 and is subject to change as investigations and corrective actions progress. This map has been prepared by Auckland Council Healthy Waters for the purpose of community engagement addressing this current public health risk. For further up to date information about where to swim, check [safeswim.org.nz](http://safeswim.org.nz).





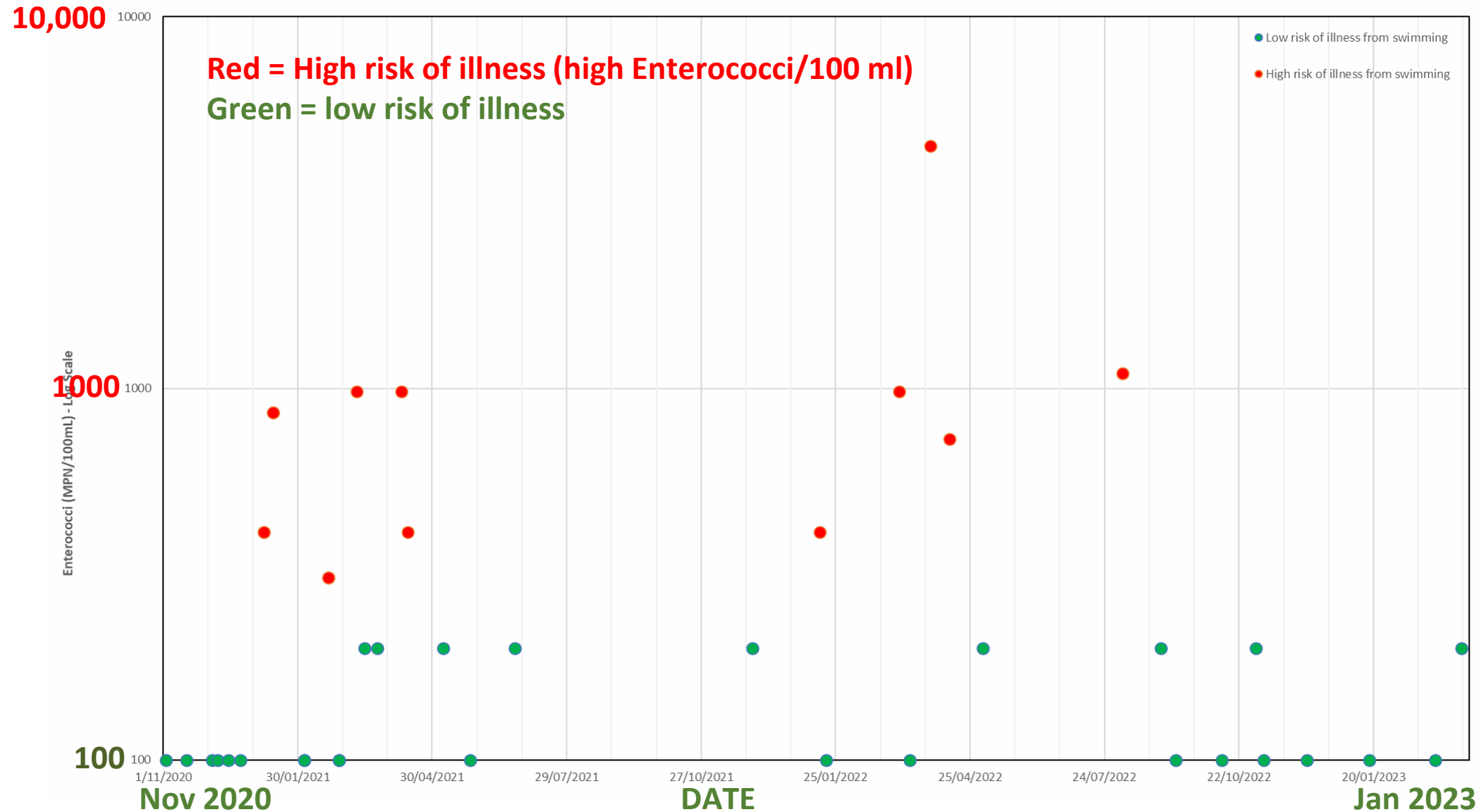
## Newmarket/Hobson Bay dry weather\* sampling progress August 2020

This map represents data collected during 2019 and 2020. It represents the likely public health risk, with respect to NZ contact recreation guidelines, across Hobson Bay/Waitararua as at 19 August 2020 and is subject to change as investigations and corrective actions progress. This map has been prepared by Auckland Council Healthy Waters for the purpose of community engagement addressing this current public health risk. For further up to date information about where to swim, check [safeswim.org.nz](https://safeswim.org.nz).

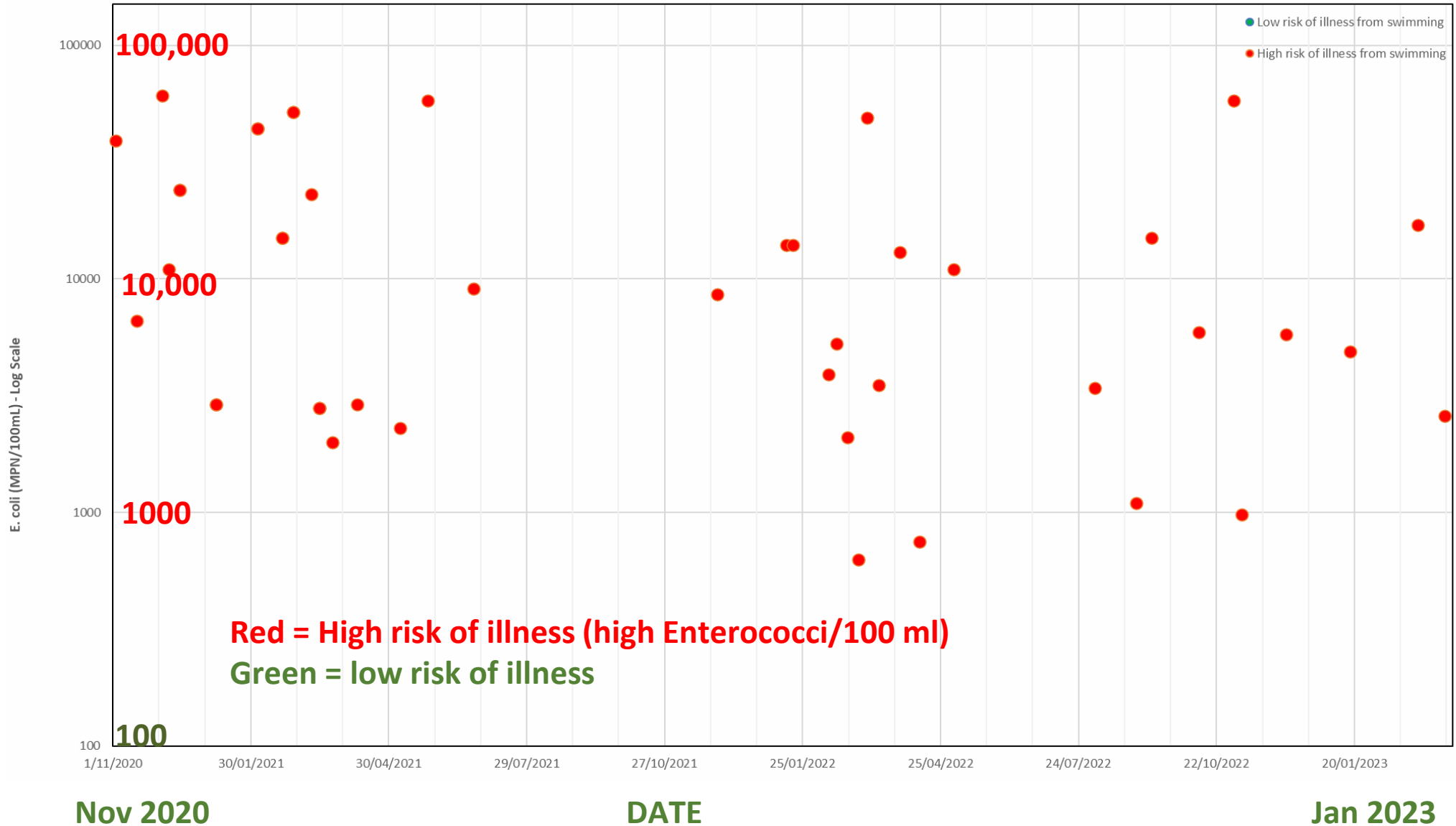
\*Less than 0.5mm of rain in last 48 hours



# Water Quality at Kayak steps – dry weather

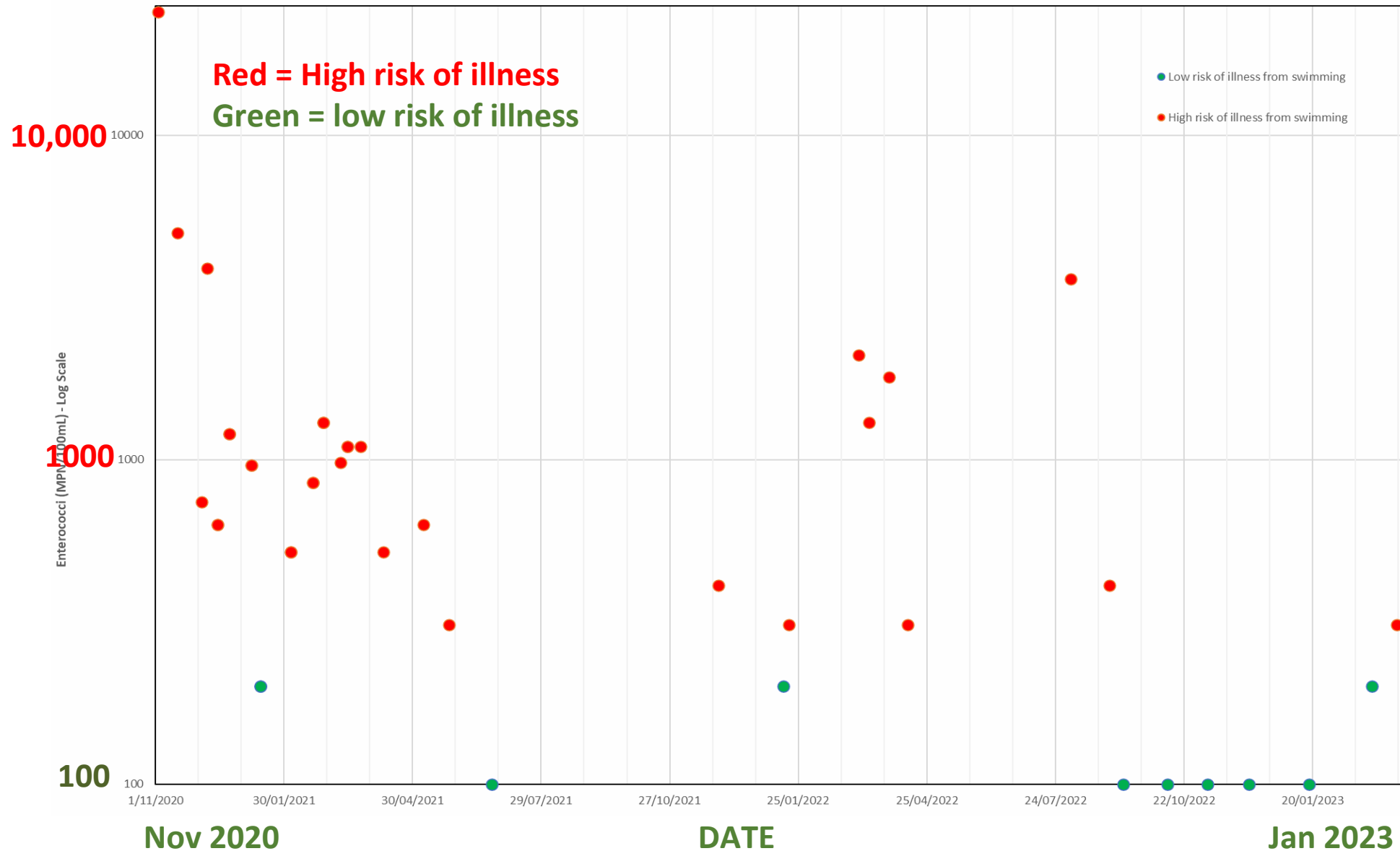


# Dry weather water quality at Hapua Stream



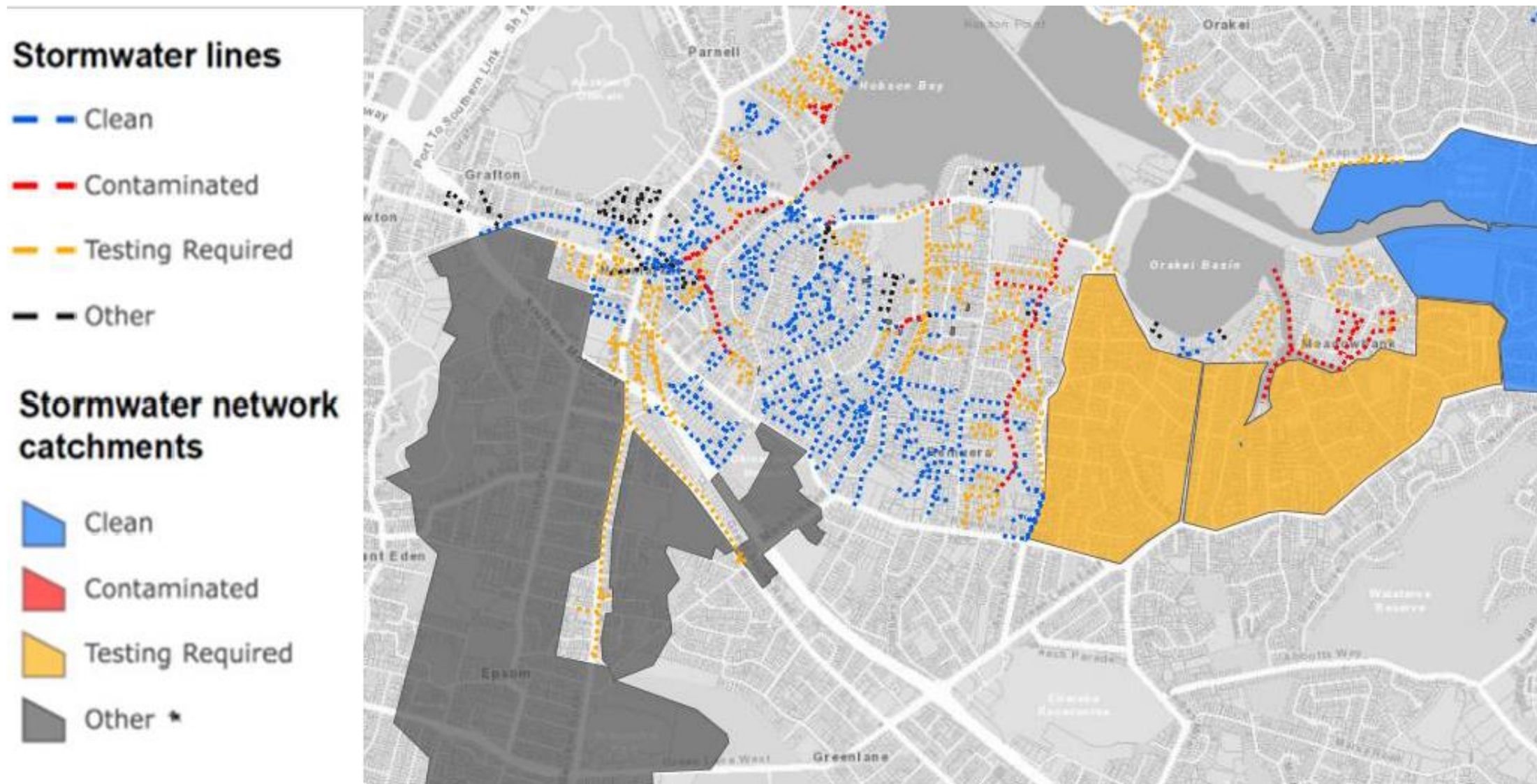


# Dry weather water quality at Portland Stream





# Safe Networks Sampling & contamination tracking. Progress to March 2023.





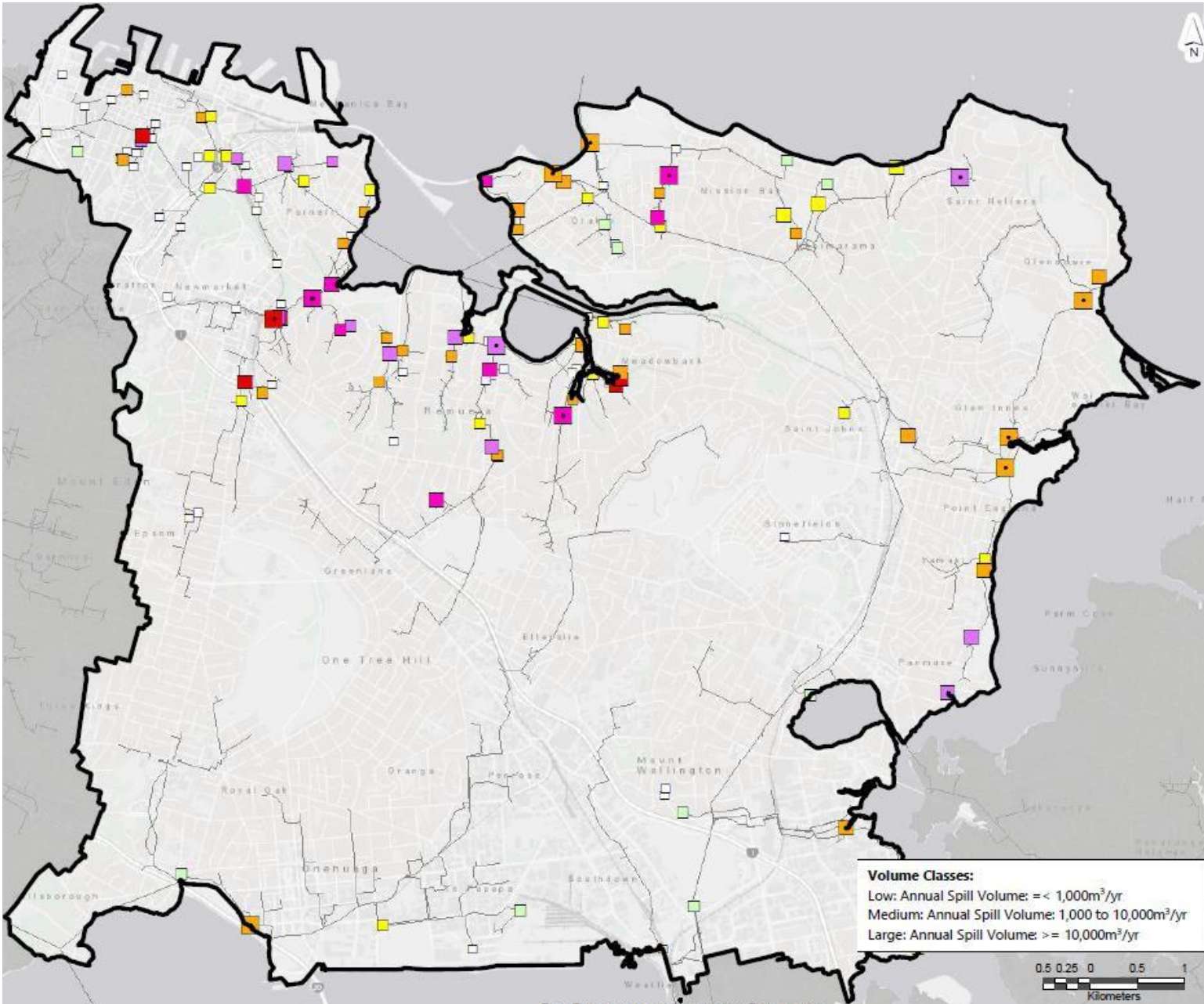
# Faults Found: 2020 to March 2023

Sub-catchment	Private issues	Private issues resolved	Public issues	Public issues resolved
Parnell	3	1	9	9
Hapua	19	17	22	14
Portland	6	2	9	7
Newmarket	10	7	21	12
Waiata	1	1	5	5
<b>Total</b>	<b>39</b>	<b>28</b>	<b>66</b>	<b>47</b>





# Modelling Wet Weather Performance 2023



**Legend**

□ Each square is the site of an Engineered Over Flow where sewage flows to streams

**Type 1&2 - EOP Spills per Yr**

- < 2
- 2 - 6
- 6 - 12
- 12 - 26
- 26 - 52
- > 52

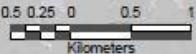
■ Dry Weather Overflow

□ No simulated spills

**Volume Class**

- Low
- Med
- Large

**Volume Classes:**  
 Low: Annual Spill Volume: ≤ 1,000m<sup>3</sup>/yr  
 Medium: Annual Spill Volume: 1,000 to 10,000m<sup>3</sup>/yr  
 Large: Annual Spill Volume: ≥ 10,000m<sup>3</sup>/yr

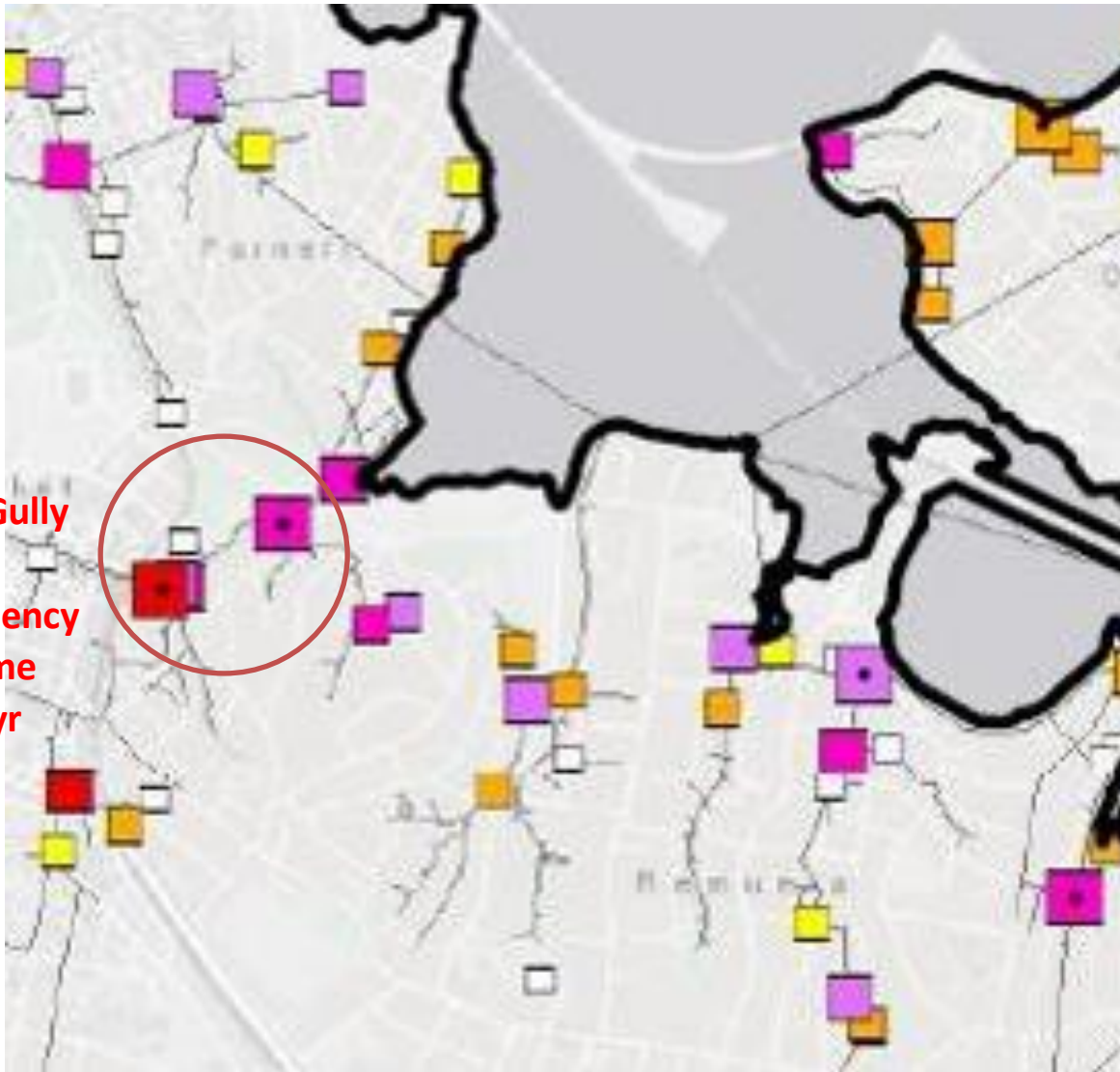




# Modelling Wet Weather Performance 2023

## Zoom to Hobson Bay

Newmarket Gully  
=  
Highest frequency  
Highest volume  
>10,000 m<sup>3</sup>/yr



### Legend

□ Each square is the site of an Engineered Over Flow where sewage flows to streams

#### Type 1&2 - EOP Spills per Yr

□ < 2

□ 2 - 6

□ 6 - 12

□ 12 - 26

□ 26 - 52

□ > 52

■ Dry Weather Overflow

□ No simulated spills

#### Volume Class

□ Low □ Med

□ Large



# Healthy Connections



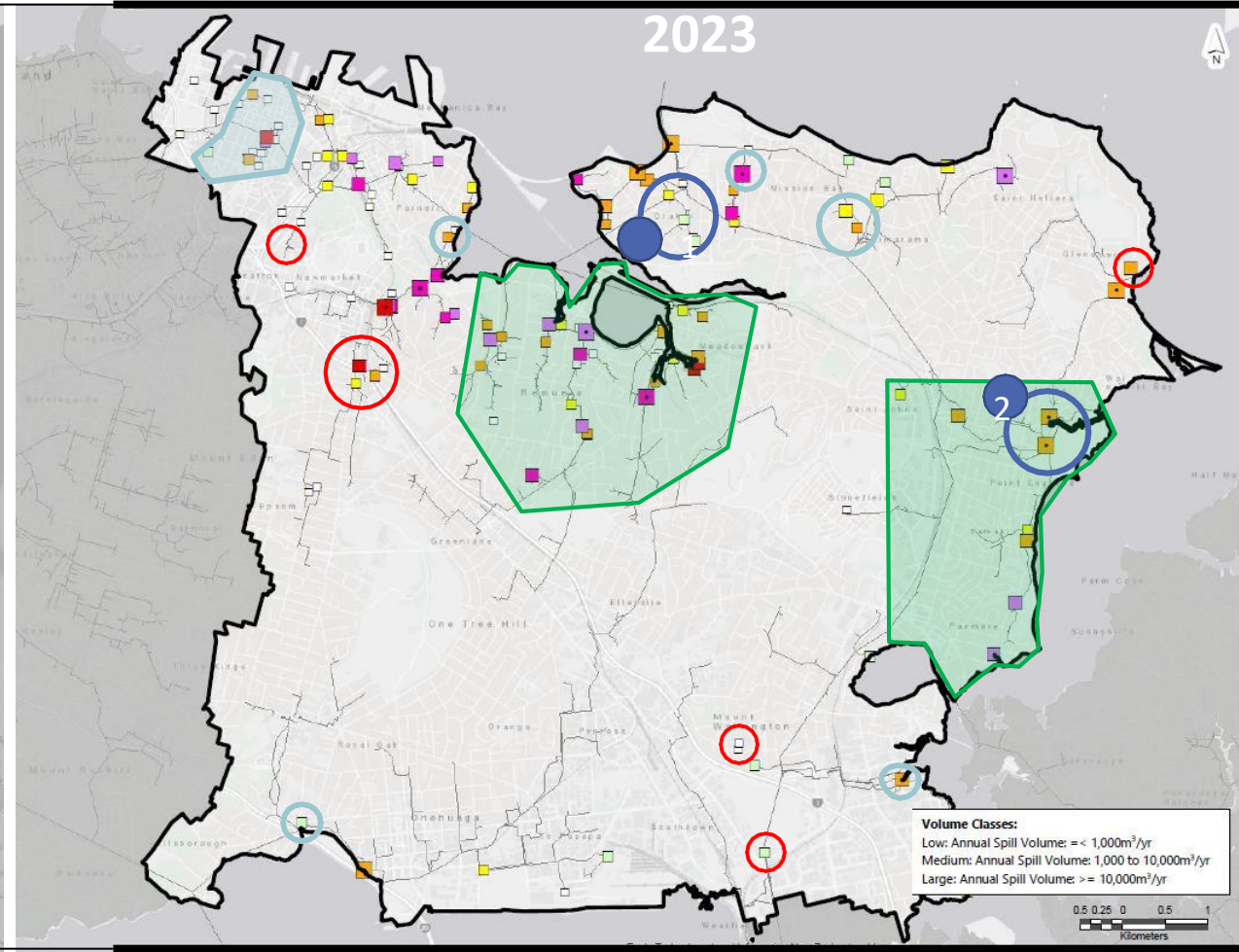
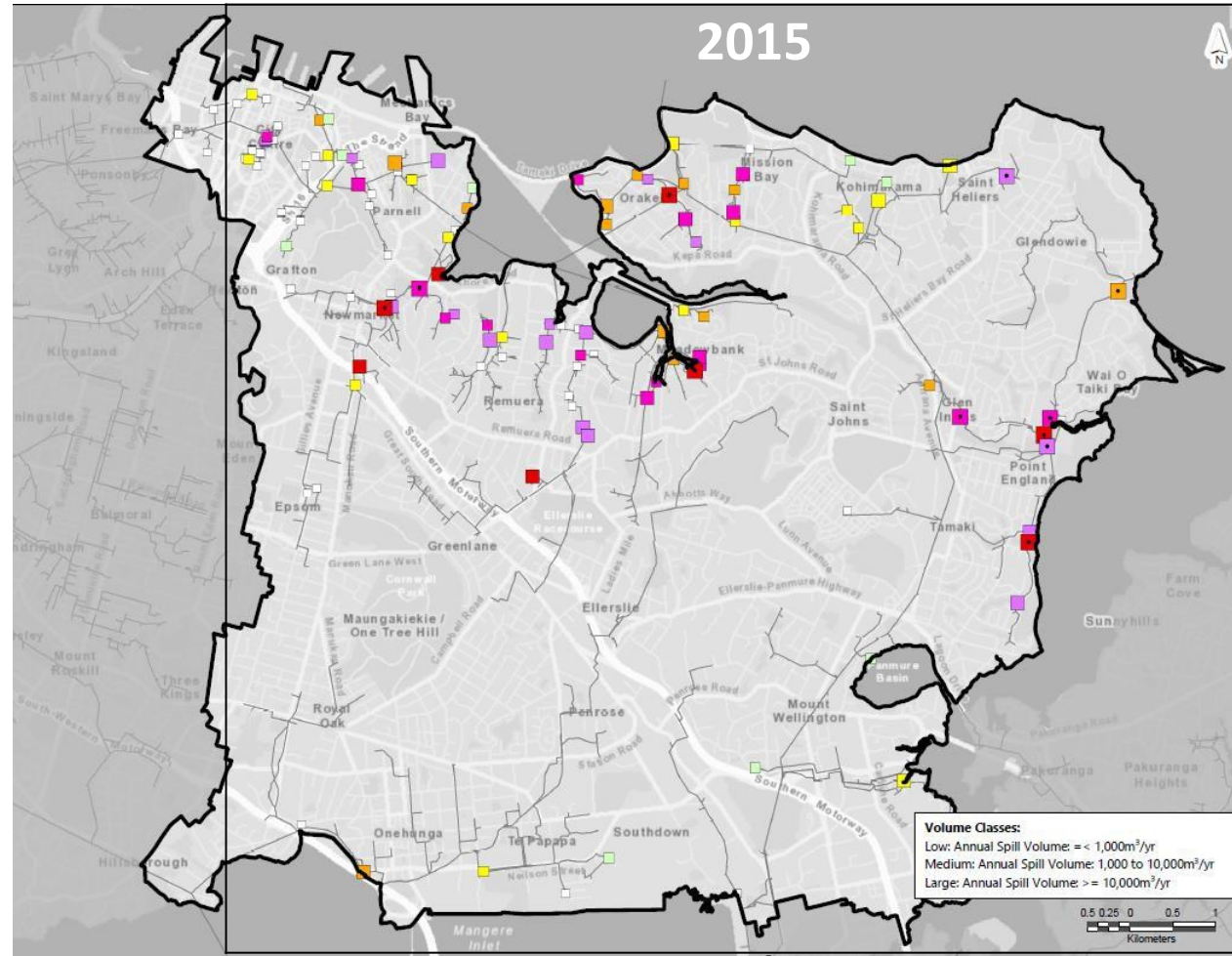
Photo Hapua Thrive



Stream Catchment	Sampling Location	Weather Conditions*	Number of Samples	E. Coli MPN/100 ml			Enterococci (MPN/100ml)		
				Contact recreation trigger (550 MPN/100ml)			Contact recreation trigger (280 MPN/100ml)		
				Minimum	Maximum	Median	Minimum	Maximum	Median
New Market and Hapua Streams	WIL201 (Kayak Steps)	Dry	30	<100	92,000	630	10	19,000	310
		Wet	49	<100	220,000	7,600	<100	87,000	750
		Neither	16	200	69,000	685	10	13,000	100
Hapua Stream	WIL205 (Bloodworth Park)	Dry	29	100	200,000	20,000	96	15,000	2,000
		Wet	51	1,000	1,100,000	44,000	<100	92,000	3,000
		Neither	14	8,600	200,000	50,500	310	15,000	4,200

Data supplied by Auckland Council 19 August 2020





**LEGEND**  
 Type 1&2 - EOP  
 Spills per Yr

- < 2
- 2 - 6
- 6 - 12
- 12 - 26
- 26 - 52
- > 52
- Dry Weather Overflow
- No simulated spills

**Volume Class**

- Low
- Med
- Large

2023 Map – Key - Commentary

	<b>Completed improvement works:</b> 1. Okahu Separation 2. Glen Innes PS Upgrade
	The areas in green have been updated with a detailed model e.g survey information, connections, local networks etc.
	EOP's: Newly identified and confirmed decommissioned EOP's
	Minor differences: e.g. updated growth projections.



Photo Hapua Thrive



## What we want in the short term

Dry weather faults fixed  
Routine testing of water  
Newmarket Gully  
locked in  
Increased  
understanding of Bay  
Further development of  
EIWQIP  
More information  
[www.hapuathrive.nz](http://www.hapuathrive.nz)



Photo Hapua Thrive

